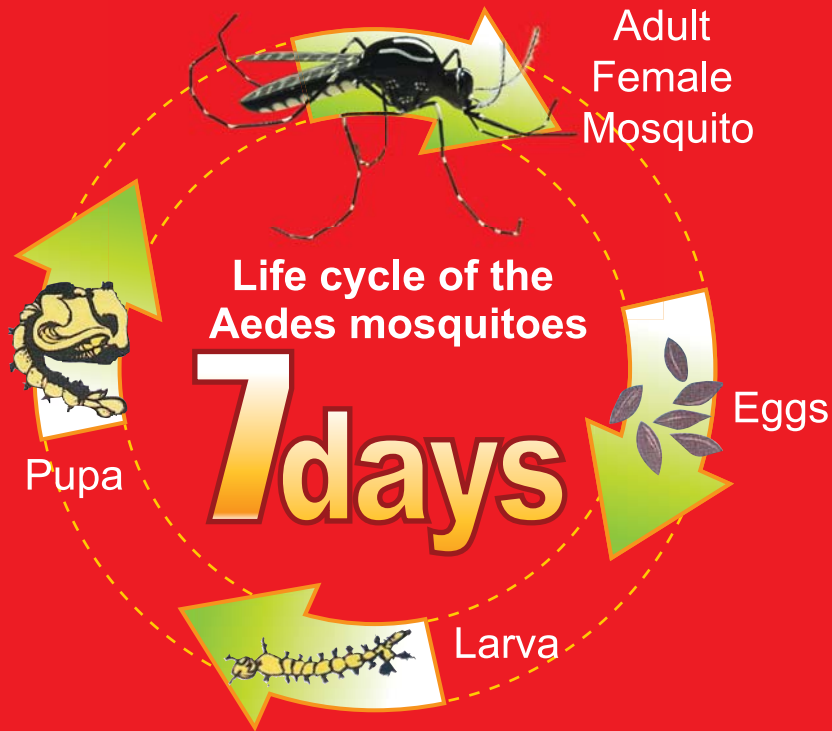


Aedes mosquitoes need only 7 days to develop from eggs to adults



You can break the Aedes mosquitoes' life cycle by destroying the breeding places inside and outside the house once a week



Published by:
Health Education Division in collaboration with Disease Control Division
Ministry of Health Malaysia
www.myhealth.gov.my • www.infosihat.gov.my
BUT. 1, KKM (CETAK/PB) 236/2008, BI 50,000



**Just take
10 minutes!!!**

**Inspect your homes
once a week and
stop Aedes breeding**



Make sure

there are **no Aedes** breeding places in the areas surrounding your house. Do the following actions:

Places to inspect	Breeding		Actions to take	(✓)
	Yes	No		
Inside the house				
Refrigerator under tray			<ul style="list-style-type: none"> Scrub and wash every week Put larvicide (<i>temephos</i>) 	
Tray under plate racks			<ul style="list-style-type: none"> Dispose accumulated water Avoid using tray 	
Ant guards			<ul style="list-style-type: none"> Scrub and wash every week Put larvicide (<i>temephos</i>) 	
Bath tub			<ul style="list-style-type: none"> Scrub and wash every week Put larvicide (<i>temephos</i>) 	
Toilet cistern			<ul style="list-style-type: none"> Cover properly Put larvicide (<i>temephos</i>) Repair immediately when faulty 	
Toilet bowl			<ul style="list-style-type: none"> Put larvicide (<i>temephos</i>) Cover properly and repair immediately 	
Pail			<ul style="list-style-type: none"> Scrub and wash every week Cover properly Keep it upside down when not in use 	
Flower vase			<ul style="list-style-type: none"> Scrub and wash every week Put larvicide (<i>temephos</i>) Avoid using water (wrap the flower stalks with wet wool/paper) 	
Outside the house				
Drums filled with water			<ul style="list-style-type: none"> Scrub and wash every week Put larvicide (<i>temephos</i>) Cover properly Dispose if not used Keep it upside down when not in use 	
Earthen ware			<ul style="list-style-type: none"> Scrub and wash every week Put larvicide (<i>temephos</i>) Cover properly Keep it upside down when not in use 	

Places to inspect	Breeding		Actions to take	(✓)
	Yes	No		
Flower pot			<ul style="list-style-type: none"> Make sure pot does not hold any water 	
Flower pot tray			<ul style="list-style-type: none"> Scrub and wash every week Put larvicide (<i>temephos</i>) Avoid using tray 	
Tin cans			<ul style="list-style-type: none"> Gather and dispose properly Keep away from rain 	
Tyres			<ul style="list-style-type: none"> Keep away from rain Put larvicide (<i>temephos</i>) Store and cover the top 	
Hydroponic containers			<ul style="list-style-type: none"> Put larvicide (<i>temephos</i>) 	
Canvas and all types of plastic sheets			<ul style="list-style-type: none"> Dispose any stagnant water Fold and keep away from rain 	
Water containers for pets			<ul style="list-style-type: none"> Scrub, wash and change the water weekly 	
Polystyrene containers			<ul style="list-style-type: none"> Gather and dispose properly 	
Drains			<ul style="list-style-type: none"> Wash and clean every week 	
To be carried out by adults only				
Rain gutters			<ul style="list-style-type: none"> Make sure no clogging Replace and repair when faulty 	